

2022

# OFFICE INTERIOR DESIGN PREDICTIONS



## 04 INTRO

## 06 REDESIGN THE WORKPLACE

for Hybrid Working

## 08 HYBRID MEETINGS: THE ZOOM ROOM

Setup the perfect video  
conference area.

## 16 ACOUSTIC PODS

Making the workplace safe again.



## 10 ANYWHERE IS YOUR WORKPLACE

Home Office Design.

## 12 EVOLVING OFFICES

Safe, Agile, and Smart.

## 20 SUSTAINABILITY

Going for the eco friendly  
sustainable option.

## 26 STORAGE

Solutions that work.

## 30 REASONS STAFF RETURN TO THE OFFICE

People want to work  
collaboratively with colleagues



## 34 OFFICE AIR QUALITY

cleanliness expends to  
the air you breath at  
the office

## 36 OUTDOOR OFFICE

How to  
Make it Work.



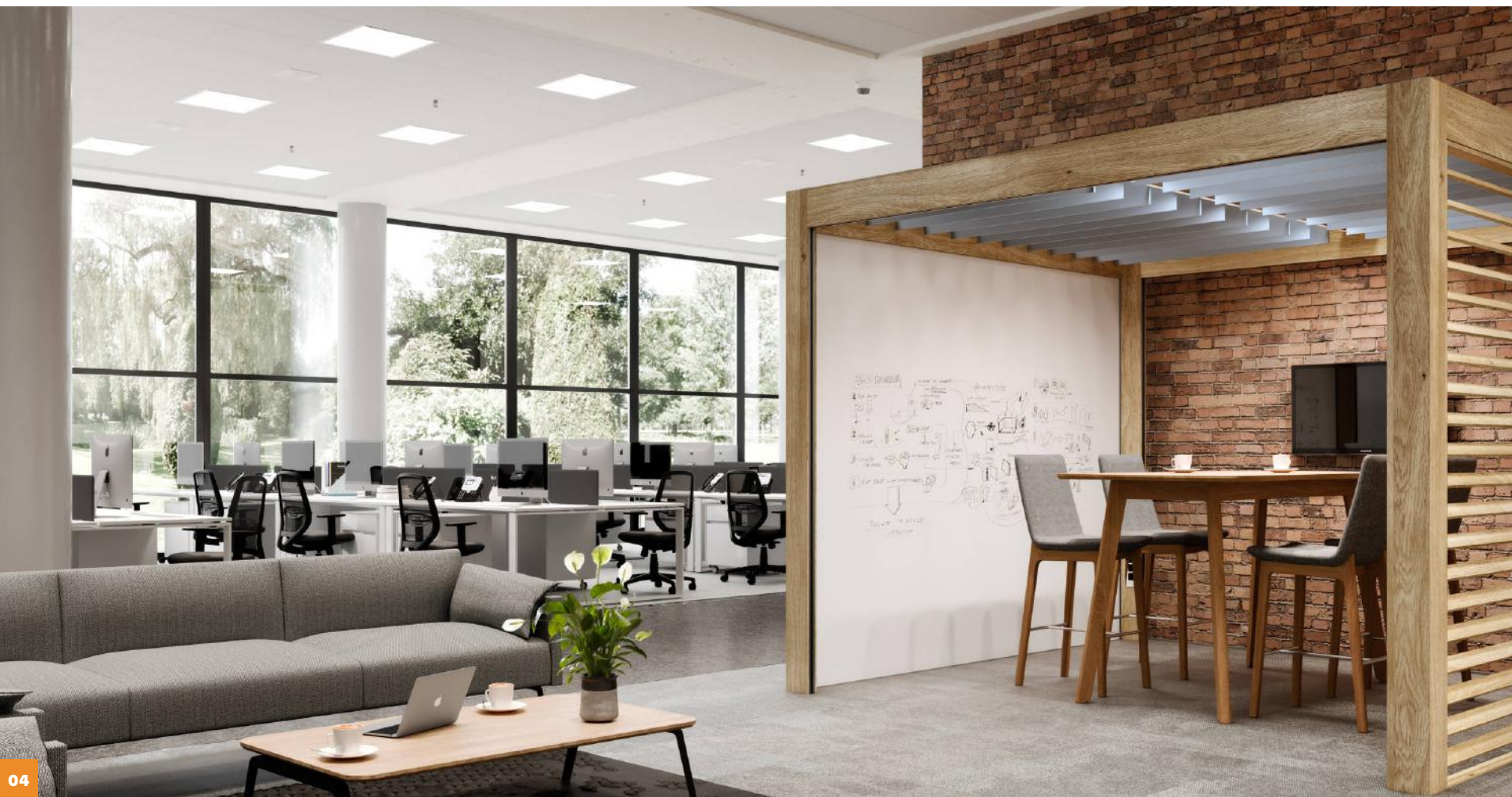
# contents



# hello!

As we look back at the live and online interior design shows of Milan, Stockholm and Clerkenwell 2021, there are clear themes and exciting trends emerging for office furnishings and interiors in 2022/23.

This ebook explores how many of the early adopters of these trends are influencing new ideas for architects, interior designers, coworking spaces and forward-thinking businesses. In particular, it looks at how wellness, sustainability, agile working, air purification technology and home office design are driving the office interiors of the future.



## KEY THEMES EMERGING FROM 2021

A reinvigorated emphasis of workplace wellbeing is still dominant throughout office design as a result of the industry's increasing understanding of how environment directly affects productivity, health and happiness at work. Interior designers and furniture makers are building on that knowledge with new technology, innovative materials and a psychological approach to layout design that taps into the emotions and motivations of employees.

Office interiors are favouring organic materials and tones, with a continuing emphasis on nature and sustainability in response to an increasingly digital workplace. 2022 will also see the worlds of home and office furniture merger closer than ever before in a response to the expectations of a workforce looking for home comforts in the office.

The subject of office ergonomics is as important as ever, with all eyes (and ears) tuned into acoustic solutions as a way to solve the heavily-debated openplan office argument. Is openplan still safe? It can be with the right tools and planning. From screens and flooring to pods and booths, acoustic solutions will be the essential office furniture items of the 2022 workplace.





# Redesign The Workplace for Hybrid Working

The vast majority of companies are now offering their staff the hybrid model of some days at and in the office. How do you redesign the office to accommodate this new hybrid work models? The decisions you make about redesigning your office space matter. As you contemplate redesigning your office space for a hybrid workforce, here are the strategies to set your employees up for success:

## OPEN PLAN IDEAS NEED TO ADAPT

Open-plan offices appear to spread germs more easily than shared offices. Multiple research studies have found that employees in open-plan offices of all sizes report taking more sick leaves. In one study, sick days were 62 percent higher in open offices than for individual offices and an eerie 30 percent higher than when six people shared a closed office.

As employers are transitioning to a hybrid work environment, many are opting for more open office space designs. The lure of open office layouts seems logical--when hybrid workers come into the office, employers want the focus to be on collaboration and face-to-face interactions, and open space layouts seem to facilitate that.



The workaround is to be creative with your desk dividers, using planters and storage walls adds function and division without closing off a space. Create zones for tasks with cooperative furniture with acoustic values in the heart of the space.

Fewer desks can mean more room for social areas. On the days we work together, we should work together. From making use of flexible working policies to establishing boundaries between home and work, those in leadership roles must set a strong example for staff teams.





# Hybrid Meetings: The Zoom Room

A trend born out of necessity in 2020/21 that will be here to stay is the Zoom Room. With Hybrid working being a big part of the next few years an area for video calls will be essential for any company to do business worldwide or connect with staff.



With open plan designs how do you create a Zoom Room where meetings can take place without disturbing the whole office? Harp has evolved specifically with the fluid workplace evolution in mind. Available to configure as an individual workspace or a multi-zone format, Harper can be designed in an infinite number of ways to create a multitude of settings and space division solutions. Available with planter modules to support space acoustics alongside aesthetically zoning settings, as well as multiple accessory options to personalise the design's required functionality.

This area needs to consider the length of meetings and the number of people who will likely be in person, this makes the POWER video conference table an ideal candidate with its comfortable spacing for up to 5 people and the ability to adjust its height.

To get the acoustics right you can use sound absorbers like wall or ceiling acoustic panels or opt for lighting with built in sound absorbers for the perfect blend of form and functionality. Conquering acoustic and lighting issues in the workspace is crucial. Loop deals with both simultaneously.

Collaboration is great and always something we would encourage but for when you need one to one video conferencing areas the Peacework from connection is the ideal candidate. Create an area where the recruitment team can hold interviews or account managers can talk to their clients without interruption. This seating booth with integrated worksurface, has been developed with the diverse needs of employees in mind and with recognition of our responsibility to achieve a better environmental balance using the sustainable application of materials.





# Anywhere is your Workplace — Home Office Design

Remote working has really helped boost productivity in many industries, we live in an era of great change when it comes to the workplace, staff now have the option to work from anywhere.

It also opens the door for designers and manufacturers to produce products and designs that meet the needs of the individual instead of an entire workforce.

Working from home should be about creating the best space for you to carry out your daily duties in a comfortable, productive space in an area that fits your requirements.



## 01 nordic

A Scandinavian-style home office puts practicality and function before all. Scandinavian decor is often minimal, using basic colors like white, black, and gray to create a space free of distraction and clutter.



## 02 industrial

The charm of this simple, elegant style has ensured that it has slowly crept from the living room and kitchen to the home office. Practical, smart and affordable, industrial home office designs place utility and adaptability ahead of all else. Embracing the allure of industrial style by combining elements of industrial design with contemporary decor and accessories.



## 03 homely

For those looking for the more traditional look but want the robustness of office furniture we can recommend the Resimercial range from Connection. A cross pollination of materials and aesthetics, combining the comfort of home styling with the durability and functional demands of a working environment.



# Evolving Offices: Safe, Agile, and Smart

The workplace can and should be an area that can easily adapt to new situations. In this respect, new technologies, agile methodologies, and the determining factors of the 'new normal' are also having, and will continue to have, a transforming effect on workspaces. The 'traditional' offices have been evolving to quickly become safe agile and Smart working environments.

New use of space require offices, and the furniture that equips them, to enable the distribution and layout to be easily changed around. With remote working taking off around the country as a complement to presential work, traditional offices have become part of an ecosystem that requires optimising and improving space efficiency. Your space should cater to the task that staff have turned up in person to complete, not just the regular day to day work.



For managing desk rotation a key principle to bear in mind is that the right sharing ratio for an evolving organisation is a moving target.

Attaining the ratio that is right for your team or organisation takes a series of adjustments to be made. For instance, ratios can be driven up over time as employees become more familiar with activity based working and take increasingly more advantage of available flexibility.





Another essential part of modern-day workspaces is technology; whether technological devices, tools and programs that are a fundamental part of everyday life and the new Smart solutions specifically designed and created to improve use, performance and productivity in workspaces.

Sensorising spaces and furniture ensures the right environmental conditions and fosters corporate well-being when it comes to temperature, air quality, density and other parameters that determine the level of well-being of a professional space, in line with the principles of the WELL v2 Certification that Actiu's Technology Park was awarded in 2019. Combined with the AeraMax Pro air purifiers are highly effective at removing various viruses and airborne pollutants from enclosed spaces. AeraMax Professional air purifiers should be considered as part of a broader proactive hygiene strategy.



Factors such as technology, the need for flexibility across the board and the importance of people's well-being have resulted in agile methodologies and equipment for collective workspaces, that open the door to a project-based work culture, fostering autonomy, freedom and flexibility irrespective of the space used by each member of the team.



*"Your work space needs to look after people and provide them with the right tools and conditions to unleash their talent and creativity."*





# the big meeting

## Acoustics Pods – Where and How To Use Them

Perhaps the most obvious benefit that come with acoustic office pods – their ability to block out sound. Acoustic office pods aim to block out as much noise as possible, giving both the office pod users and wider workspace employees a quieter environment to concentrate in.

With more of us working the hybrid models means there is an increase in video and voice calls. Pods become the ideal situation to combat these office distractions.



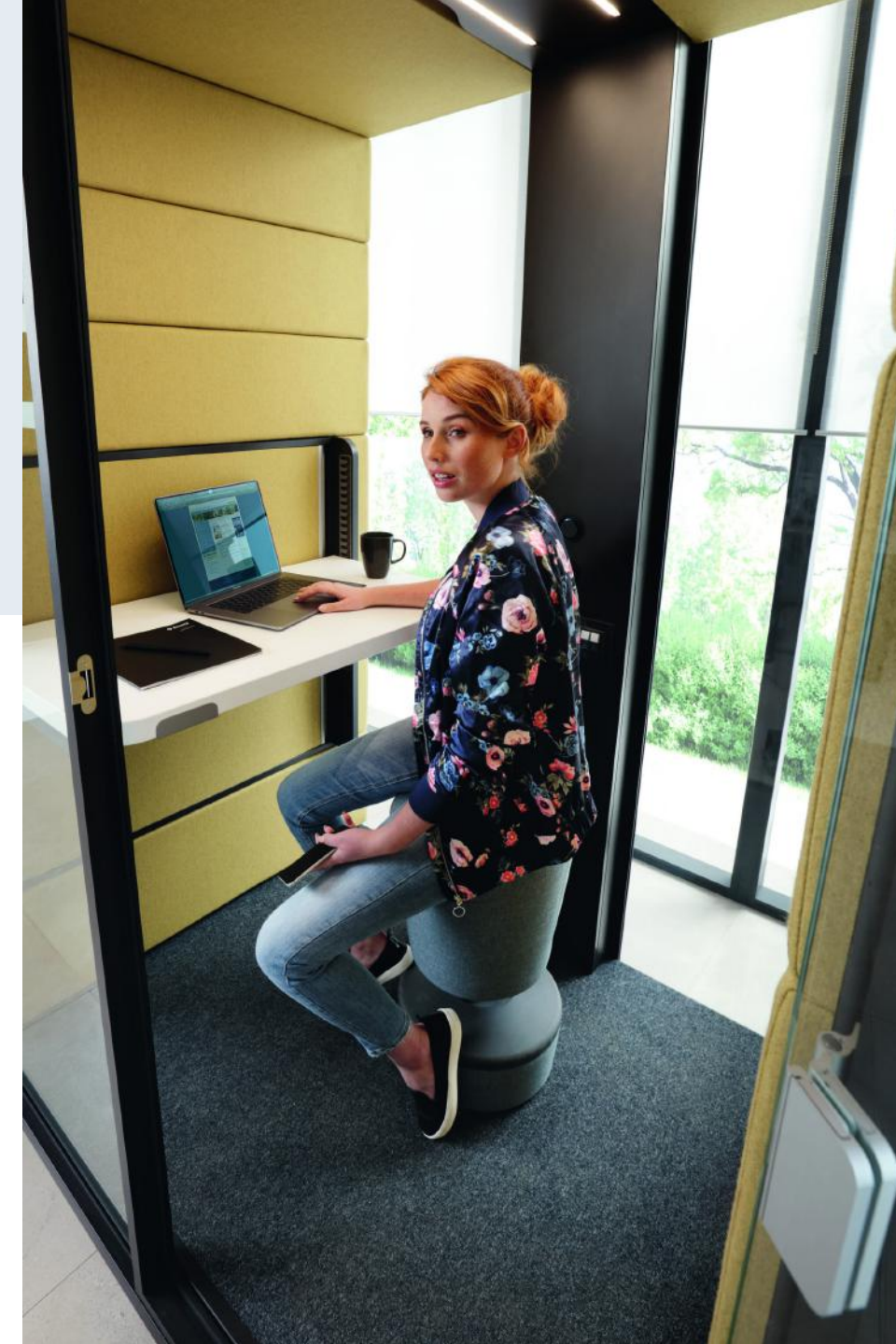




Finally there is a wheelchair accessible option on the market. We are delighted to finally be able to offer our customer the inclusive option of the Silent Room range. This pod range comes with everything you would expect from an Acoustic Pod like air ventilation and lighting solutions. As the floor level of the acoustic pod corresponds to that of the surrounding office space and the door of the SILENT ROOM only has a small doorstep that poses no risk of trips or falls.

A modern proposal used in acoustic booths from the Hush family is a special antivirus coating – thus the most frequently used surfaces covered by it do not require additional disinfection.

The antivirus coating is a thin layer of titanium dioxide (IV) – a safe substance that is used, among other things, for the production of creams with UV filter. The photocatalytic properties of the coating cause the oxidation of organic pollutants, bacteria and viruses under the influence of light on its surface. They are decomposed into carbon dioxide, water and simple inorganic ions.



*“Finally there is a wheelchair accessible option on the market”*





# Sustainability

Going for the eco friendly sustainable and furniture with a long life

Organisations are increasingly aware of their impact on the world around them and as such they are searching for and finding ways to take care of the environment through their products, processes and spaces in order to become truly sustainable companies. In 2021 we achieved certification in ISO 14001 and have a fleet that is 1/3 electric. We plan to do more with renewable energy in 2022 and beyond.

M2 Office Interiors feel privileged to work with likeminded suppliers like Sedus, Actiu, Humanscale and others who share our ethos for a more green workplace. From pioneering European measures of incorporating MDF 0% formaldehyde as standard and ergonomic products that are engineered to the point that they are manufactured with minimal parts yet remain the best in class.

Production of tables such as the Longo generates a carbon footprint - carbon dioxide (CO2) emissions - 56% lower than other similar models from other manufacturers. With the Tabula table, this decrease in emissions is close to 41%. Regarding chairs, producing a piece from the Uma model reduces the carbon footprint by 68.5% compared to other similar chairs.



The Actiu Agile collection contains interior foam generated from recycled PET plastic when creating Tiers, auxiliary tables, Caddy 500 and decorative acoustic panels. Along with thier 0% formaldehyde MDF as standard, it makes for a very attractive sustainable option.



Between 500,000 to 1 million tons of fishing gear are discarded or lost in the ocean every year.

The material used to produce the Ocean range from Humanscale is sourced from a collection and recycling program aimed at combating the detrimental effects of discarded ocean fishing nets. These nets are transformed into recycled nylon pellets used for manufacturing.

The material used to produce the Ocean range from Humanscale is sourced from a collection and recycling program aimed at combating the detrimental effects of discarded ocean fishing nets. These nets are transformed into recycled nylon pellets used for manufacturing.



*"It's a sustainable design that we hope to see more manufactures take on in the coming years."*





## INVEST IN YOUR SURROUNDINGS

The physical office needs to be a place where people want to work, which means light, space, style and options for quiet, collaborative and social working spaces. With hybrid working meaning less time spent in the office, it's easy to forget the important role of networking. Creating opportunities to connect with others in the company and industry is key to keeping employees engaged. The shared knowledge, behaviours and skills of a team result in productive, collaborative working. The decline in social interaction since the pandemic should be counteracted with quality social time and support to rebuild connections.



## EVOLVING YOUR OFFICE LAYOUT

Use existing open plan furniture where possible and replace what is no longer fit for purpose with adaptable furniture. Your daily driver should now be a desk that can be moved, stored and or repurposed depending on the task at hand.

Your return-to-office plan will inevitably be rife with complexity. Few decisions are as important as how you will redesign your physical workplace to meet the evolving needs of your employees.





# Storage



Office Storage systems need to be efficient, aesthetically pleasing and fit for task in order to keep the office organised. What use is a fancy storage solution if it doesn't correctly hold your chosen file type or folder size. Properly planned adequate storage will not only help keep the workplace clutter-free, but also increase productivity. Too much time is wasted in an office attempting to find documents or files, normally because they were not stored properly or are in the wrong place. For every office to run systematically, an efficient storage system must be installed.



Storage option needs to be boring, make it work for your space and branding. Storage can now also be a statement piece, which is why we are seeing more and more workplace designs opt for the Lockerwall. They work perfect for an open plan design where space is at a premium. The Lockerwall puts your walls to work and gives them a valuable function from storage to seating. A modular and entirely bespoke system, meaning it can flex to create a variety of different workplace

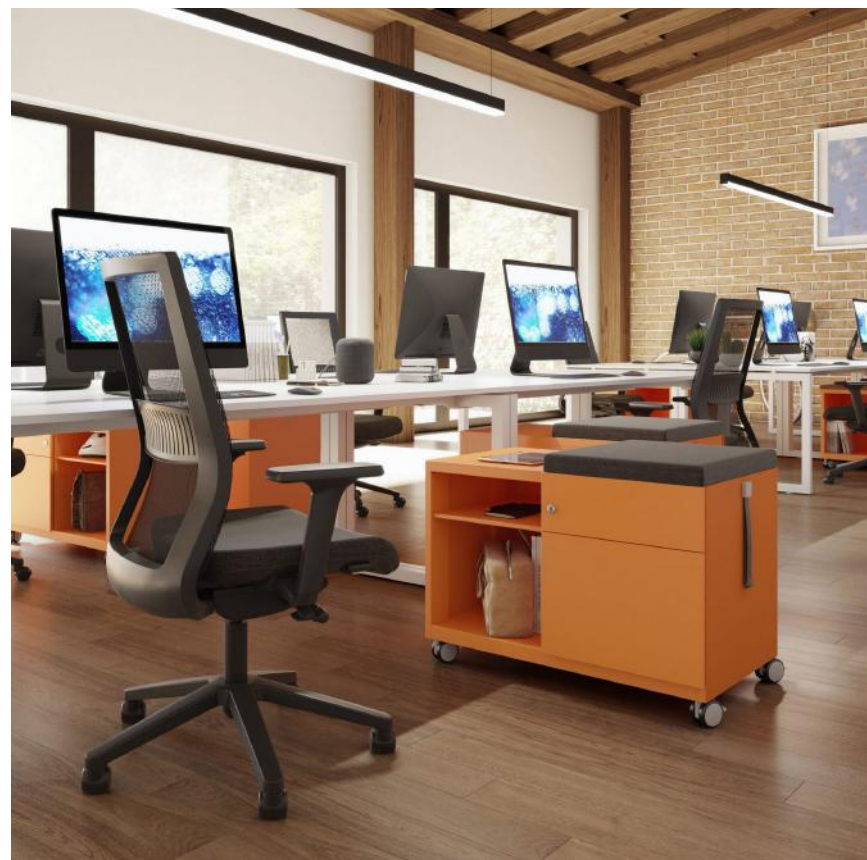
settings, outside of the desk. Each column is individual so you can select every unit with your colleagues' needs in mind. Not only is there a huge choice of lockers, but you can mix and match with larger storage cupboards, coat cupboards, bookshelves and soft seating nooks. Whether you want to create a beautiful guest welcome area, dedicated spaces to catch up between meetings or pleasant, functional breakout zones, Lockerwall delivers so much more than just storage.





The Caddy is flexible and multifunctional and is personal storage at its best. Perfect for companies who are using an agile hot desking system. Mounted on castors, means it doesn't have to live under the same desk, it can be taken to wherever it is needed most. Both functional and versatile, the Caddy is not only secure individual stowage, but with the addition of a seat pad, it's an ideal perch place for impromptu collaboration.

With a large choice of colours, finishes and fabrics available, the Caddy is an attractive and flexible addition to any workspace that can be tailored to your exact specifications.



Storage are the new dividers, mainly because they also provide a function but why wouldn't want to maximise your office space and replace old dividers with a storage solution that actually creates division and can be customised to your liking, such as height, material used and even adding planters to get some green into the office.



# Reasons Staff Return to the Office



of people want to work collaboratively with colleagues



want to socialise with others



wanted to attend in person training



are looking forward to attending in person meetings

Employees reasons to return to the office. According to WKspace who polled 876,470 people in September 2021.

It makes for interesting reading and it's amazing to see new furniture lines that have been developed with this information in mind.



The Resimercial range from connection is residential décor with commercial functionality that is truly redefining workplace culture in 2022. It was inspired by the ever-changing landscape of our workspace.



A collection of soft-seating, statement chairs and tables characterised by soft home interior inspired fabrics, warm colour palettes and natural materials, the Resimercial collective is an elegant and reassuring design style which creates unparalleled comfort and practicality with a stunning overall design aesthetic.

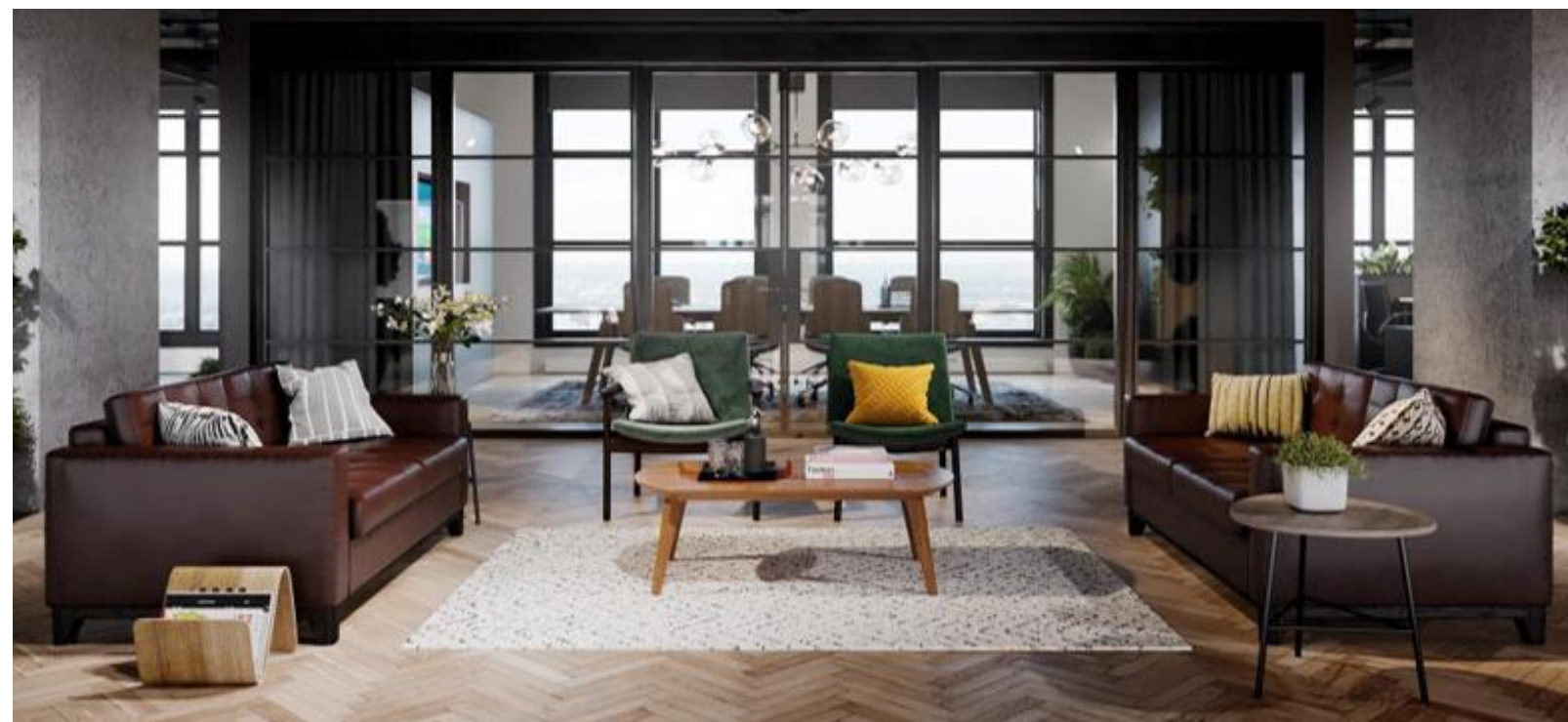


need a change in routine and scenery



want to improve their wellbeing





Companies want their staff to feel at home when they come to the office and after two years of working with home comforts you can understand why.

It is upto designers to create desirable workplaces and encourage both current and future employees back into the office, employers and designers must understand how to balance wellbeing, motivation, and consistent performance in this growing workforce diversity. Office design is now more important than ever as staff retention could depend on the setting/settings they are expected to work in.





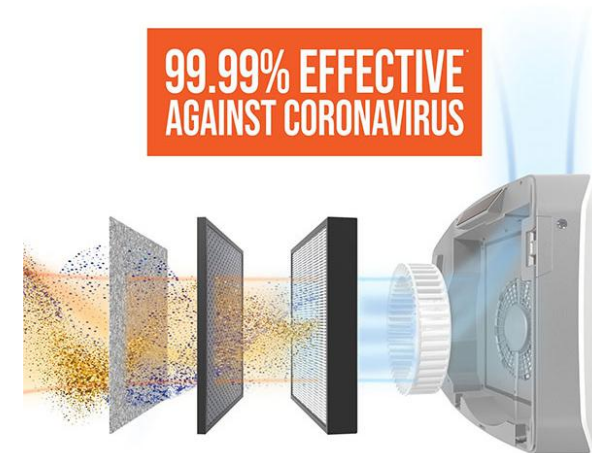
# office air quality

It feels strange to write that clean air is going to be a big trend going in 2022 and beyond but it really is. Never have people been so aware of their surroundings, the people in their vicinity and the cleanliness of their workplace. This cleanliness extends to the air you breath at the office.

Years of R&D and rigorous testing, including testing with Human Coronavirus 229E have proven the AeraMax Pro range of air cleaners to be effective at removing airborne virus, dust, pollen and other irritants from the air we breathe. HEPA Filters provide reduced energy costs, more efficient production and a healthier working environment with less dust and fewer harmful particles.

With solutions to suit most business needs we are sure we can provide the right device for the right coverage, for example there are wall mounted units such as the AeraMax Pro 2 which is suitable for restrooms, kitchen or small office spaces and there are units like the AeraMax Pro 4 designed for rooms from 55m<sup>2</sup> to 130m<sup>2</sup> like conference rooms, classrooms, fitness studios and cafeterias. It's also perfect for common areas and places where people congregate often. Because it removes up to 99.9% of airborne contaminants, you're assured a truly next-generation clean of your facility.

A well-engineered machine is quickly let down if using poor filters. The AeraMax range use True HEPA filters conform to IEST 1.5 HEPA Standard which proves 99.97% at the 0.3 micron size. In addition, the filters can capture more than 97.8% of pollutants at 0.1-0.15 microns, based on IBR Laboratories test data.



\*Based on laboratory testing with Coronavirus 229E





# Outdoor Office Space Design – How to Make it Work

When we help our customers, it is always about maximising their space and an area most companies overlook is their outdoor space. Current events have rethought us the importance of fresh air. Regardless of what's going on, its good to get out of the office when ever possible.

For those short on space we recommend the outdoor hotdesking option, opt for floor-to-ceiling sliding glass doors and setup a small one or two person workstation with outdoor furniture and sufficient cover from the sun/rain. It can even be connected to a balcony so more employees can enjoy the space.

Although it's unlikely that the entire office will be outside at once, you still need to make sure there are enough surfaces and seating to accommodate several workers at any given time. Internal studies suggest a space to accommodate 15-20% of your workforce is adequate.

The weather will always be an unknow but if you are looking at unused car park spaces or a depot area that could do with a facelift then maybe it's time to create an outdoor area for staff to have lunch, meetings or even work part of their day at?



*“For those short on space  
we recommend the outdoor  
hotdesking option”*

Generally speaking, long tables that comfortably seat 6-8 people should do the trick. You can also add a few 1-2 person tables for those who really need to work alone to fully concentrate or hold one to one private meetings.

To last all year round in Irish weather you will need strong and durable materials that will keep looking good in rain or shine:

- Stainless steel
- Polypropylene with UV additives
- Aluminum
- Hardwood
- Polyurethane foam
- Plastic
- Fiberglass
- Acrylic fabric
- Polyester
- Synthetic resin (used to replicate the look of wicker)

Designing an outdoor workspace comes with new unique challenges for office layout design. We found that retractable Awning works great and of course, WIFI extenders are a must. Heat Lamps are a great way to take the sting out of the air but if Awning isn't possible there is always another option such as Umbrellas or Canopies.





# M2 Office Interiors

## **Dublin Showroom**

City Post Building  
Greenogue Business Park  
Jordanstown  
Dublin  
D24 RY89

Contact  
(01) 6111 025  
[sales@m2.ie](mailto:sales@m2.ie)

## **Limerick Showroom**

Unit A2  
Corcanree Business Park  
Dock Road  
Limerick  
V94 F2N1

Contact  
(061) 303 666  
[sales@m2.ie](mailto:sales@m2.ie)

